

VESSEL PARTICULARS

Length Overall	170 ft	51.8 m
Beam	30 ft	9 m
Depth	13 ft	4 m
Light Draft	6 ft	1.8 m
Loaded Draft	8 ft	2.4 m
Gross Tonnage	99 Tons	
Net Tonnage	67 Tons	

CAPACITIES

Drill/Potable Water	40,160 USG	152 m ³
Potable Water (Ship's)	800 USG	3.0 m ³
Fuel	16,560 USG	62.7 m ³
Engine Lube Oil	400 USG	1.5 m ³

CARGO DECK

Tonnage	200 LT	203.2 MT
Length	100 ft	30.5 m
Width	24 ft	7 m
Clear Area	2,400 ft ²	731.5 m ²

MACHINERY

Main Engines	4 – Caterpillar 3512
Horsepower	5,600
Reduction Gears	Twin Disc MGX 6990
Gear Ratio	2.47:1
Rudders	2 – 36" x 39" Foil
Propellers	4 - 48" x 53" x 5"
Auxiliary Generators	2 – 75kW, 120/208VAC, 3 Phase
Bow Thruster	28" 300 HP Caterpillar 3306

PERFORMANCE

Maximum Speed	25 knots
Cruising Speed	20 knots
Maximum Fuel Consumption	250 USG/Hr
Cruising Fuel Consumption	200 USG/Hr

DISCHARGE RATES

Drill/Potable Water	100 USG/min at 80 ft
Fuel	100 USG/min at 80 ft

ELECTRONICS & CONTROLS

Depth Sounder	Furuno RD-30
Dynamic Positioning	Beier
AIS	JRC JHS-182
GPS	1 - Furuno
Radar(s)	2 – Furuno FR7112
VHF	2 - Icomm
SSB	1 – Furuno FS-1503
Fathometer	Furuno RD30

ACCOMMODATIONS

Certified to Carry	76
No. of Passengers	72
Cabins/Berths	4 / 8

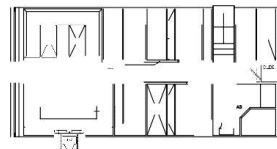
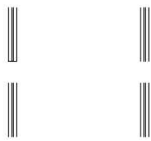
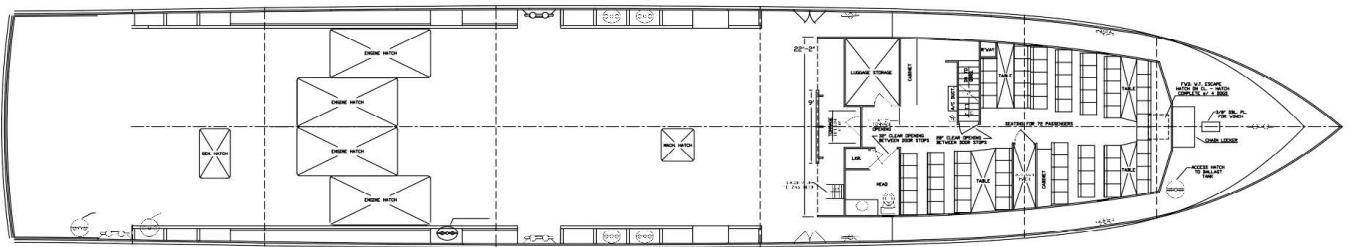
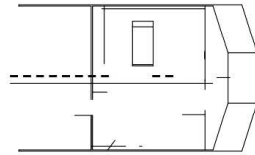
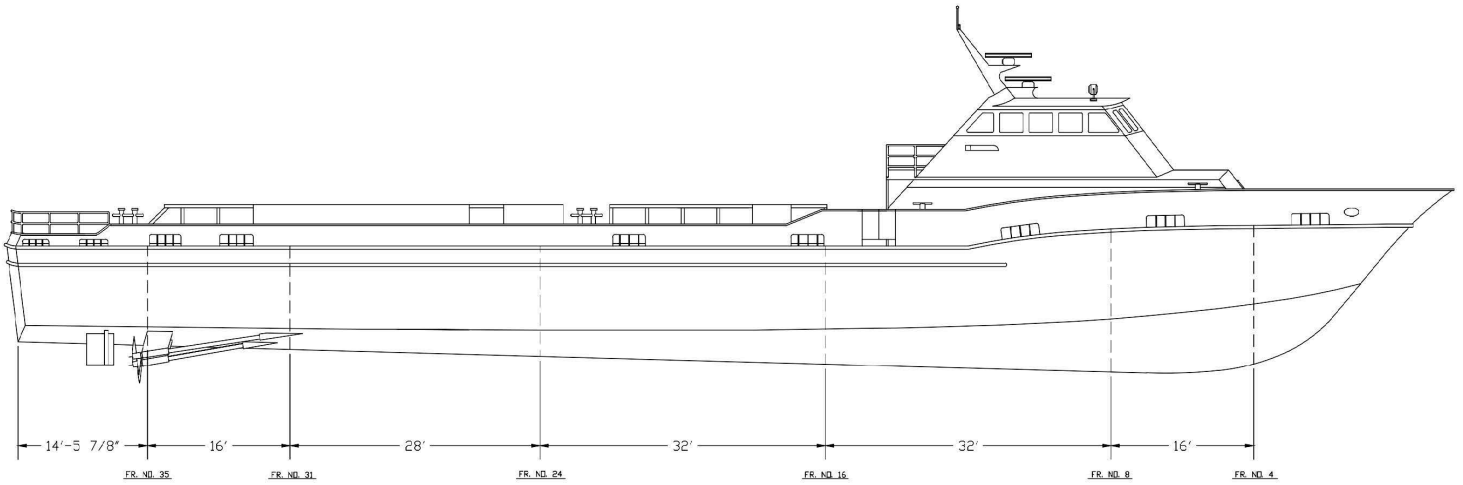
DOCUMENTATION

Official No.	1157375
Year Built	2004
Builder	Breaux Bay Craft
Hull	Aluminum
Flag	United States
USCG	Subchapter T



GENERAL ARRANGEMENT

MR LLOYD



1428 Hugh Wallis Road S. ● Lafayette, LA 70508
Phone: 337-706-8200 Fax: 337-706-7627
Website: www.RodiMarine.com

