

VESSEL PARTICULARS

Length Overall	155 ft	47.24 m
Beam	30 ft	9.00 m
Depth	12.4 ft	3.7 m
Light Draft	5.6 ft	1.7 m
Loaded Draft	7 ft	2.1 m
Gross Tonnage	98 Tons	
Net Tonnage	68 Tons	

CAPACITIES

Drill/Potable Water	30,448 USG	115.3 m ³
Potable Water (Ship's)	800 USG	3.0 m ³
Fuel	15,040 USG	56.9 m ³
Engine Lube Oil	400 USG	1.5 m ³

CARGO DECK

Tonnage	200 LT	203.2 MT
Length	87 ft	26.5 m
Width	25 ft	7.6 m
Clear Area	2,175 ft ²	662.9 m ²

MACHINERY

Main Engines	5 – Caterpillar 3412 DITA
Horsepower	4,125
Reduction Gears	Twin Disc MG 518
Gear Ratio	2.5:1
Rudders	2
Propellers	5 Fixed Pitch 42"D x 38"P
Auxiliary Generators	2 – 50kW

PERFORMANCE

Maximum Speed	24 knots
Cruising Speed	20 knots
Economy Speed	20 knots
Maximum Fuel Consumption	140 USG/Hr
Cruising Fuel Consumption	120 USG/Hr
Economy Fuel Consumption	112 USG/Hr

DISCHARGE RATES

Drill/Potable Water	400 USG/min at 80 ft
Fuel	400 USG/min at 80 ft

ELECTRONICS & CONTROLS

Depth Sounder	International Offshore
GPS	1 – Furuno
Radar(s)	2 – Furuno
VHF	3 – Icom
SSB	1 – Furuno
AIS	1 – Furuno
External Fifi	1 – Monitor

ACCOMMODATIONS

Certified to Carry	76
No. of Passengers	72

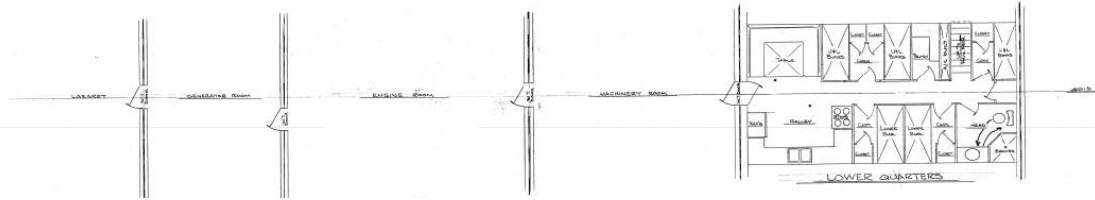
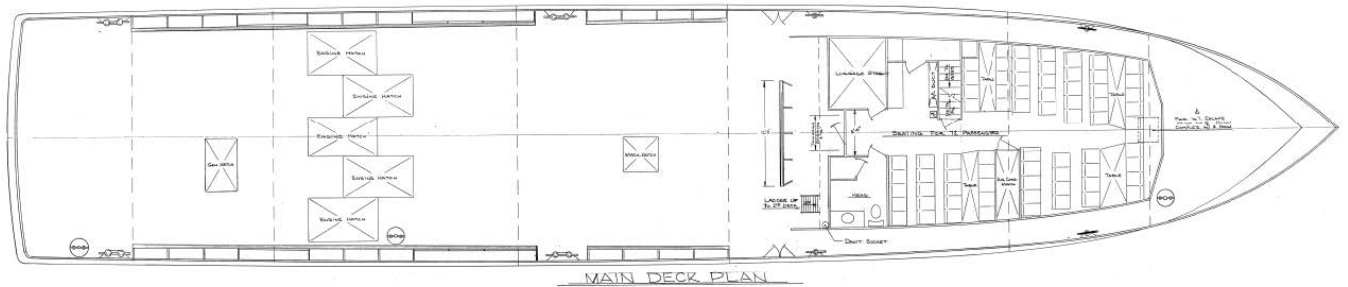
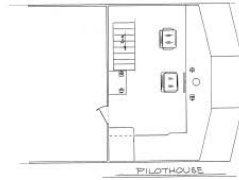
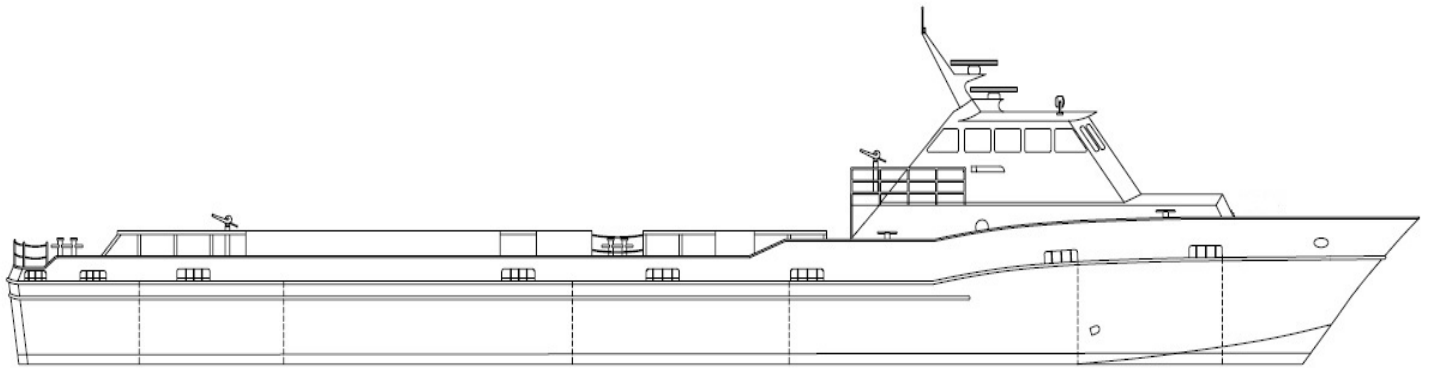
DOCUMENTATION

Official No.	981473
Year Built	1992
Builder	Breaux Bay Craft
Hull	Aluminum
Flag	United States
USCG	Subchapter T



GENERAL ARRANGEMENT

WILDCAT



1428 Hugh Wallis Road S. • Lafayette, LA 70508

Phone: 337-706-8200 Fax: 337-706-7627

Website: www.RodiMarine.com