



# MISS PEGGY ANN

## 135' Crew Boat/FSV

### VESSEL PARTICULARS

Length Overall	135 ft	41.1 m
Beam	26 ft	7.9 m
Depth	11.7 ft	3.6 m
Light Draft	5.6 ft	1.7 m
Loaded Draft	7 ft	2.1 m
Gross Tonnage	91 Tons	
Net Tonnage	62 Tons	

### CAPACITIES

Drill/Potable Water	19,400 USG	73.4 m <sup>3</sup>
Potable Water (Ship's)	800 USG	3.0 m <sup>3</sup>
Fuel	9,700 USG	36.7 m <sup>3</sup>
Engine Lube Oil	200 USG	1.0 m <sup>3</sup>

### CARGO DECK

Tonnage	85 LT	86.4 MT
Length	68 ft	20.7 m
Width	22 ft	6.7 m
Clear Area	1,496 ft <sup>2</sup>	139 m <sup>2</sup>

### MACHINERY

Main Engines	4 – Caterpillar C18
Horsepower	2,800
Reduction Gears	Twin Disc MG
Gear Ratio	2.5:1
Rudders	2
Propellers	39" D x 38" P Fixed Pitch
Auxiliary Generators	2 – 40kW

### PERFORMANCE

Maximum Speed	22 knots
Cruising Speed	20 knots
Maximum Fuel Consumption	120 USG/Hr
Cruising Fuel Consumption	110 USG/Hr

### DISCHARGE RATES

Drill/Potable Water	400 USG/min at 80 ft
Fuel	400 USG/min at 80 ft

### ELECTRONICS & CONTROLS

Depth Sounder	Furuno
GPS	1 – Furuno
Radar(s)	2 – Furuno
VHF	2 – Matrix
AIS	1 – JRC
SSB	1 – Furuno

### ACCOMMODATIONS

Cabins/Berths	5 / 8
No. of Passengers	68
Mess Seating	7

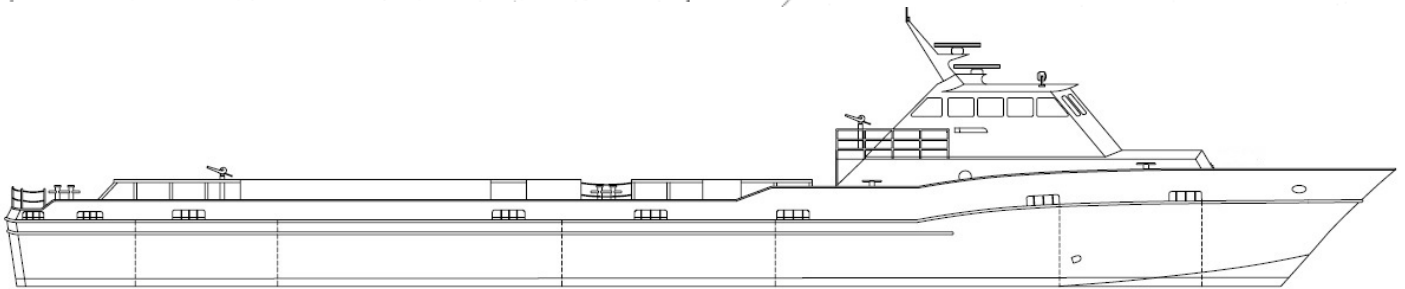
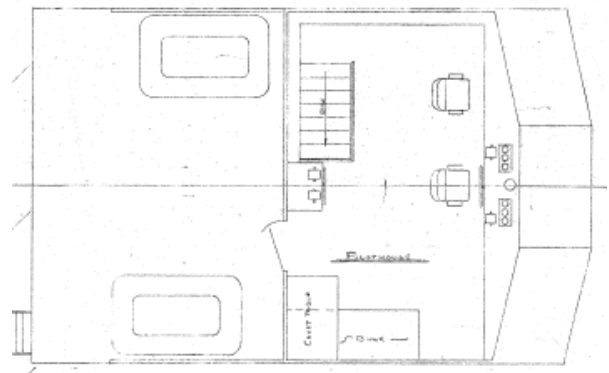
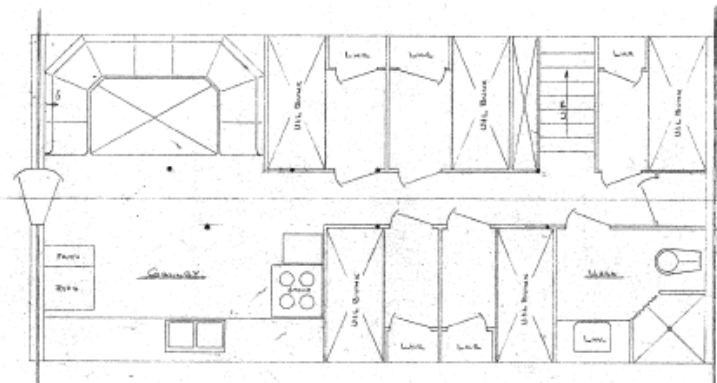
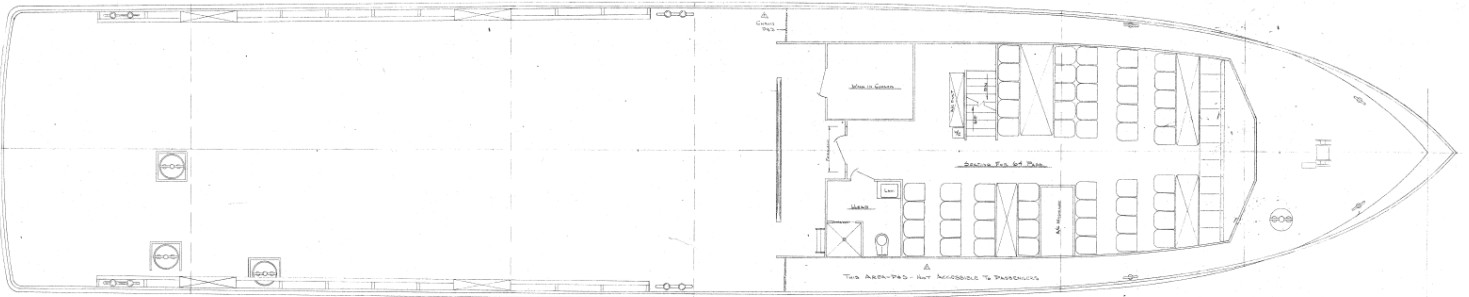
### DOCUMENTATION

Official No.	949478
Year Built	1989
Builder	Breaux Bay Craft
Hull	Aluminum
Flag	United States
USCG	Subchapter T



# GENERAL ARRANGEMENT

# MISS PEGGY ANN



1428 Hugh Wallis Road S. • Lafayette, LA 70508

Phone: 337-706-8200 Fax: 337-706-7627

Website: [www.RodiMarine.com](http://www.RodiMarine.com)